

## News Clip

From: *Miami Today*, Thursday, April 14, 2011

Subject: **Mammoth Miami Central Station's work to start by May 1, end in 2013**

Provided by: Jenine Spoliansky, Kommunikatz, Inc.  
[jspoliansky@kommunikatz.com](mailto:jspoliansky@kommunikatz.com)



The energized MIA Mover guideway will connect the airport's main terminal with Miami Central Station.

## Mammoth Miami Central Station's work to start by May 1, end in 2013

BY MARILYN BOWDEN

Miami Central Station, the centerpiece of the county's mammoth Miami Intermodal Center at the airport, will break ground in a matter of weeks.

"We're looking to start construction by May 1," said Gary Donn, Florida Department of Transportation's project manager for the center. "We are finalizing the contract with Turner Construction, and then we will be in a position to issue a letter of authorization and get started."

He estimated a 25-month construction schedule, making the station operational in June or July of 2013.

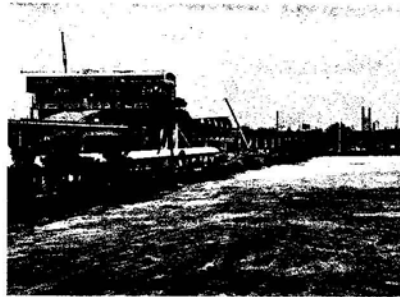
The site, which formerly housed the Hertz and Avis rental car facilities, is bounded by Northwest 25th Street, 37th Avenue, 21st Street and 38th Court.

Miami Central Station, designed as a hub for many ground transportation modes, will include an enhanced Tri-Rail station.

"We will be rebuilding the existing Tri-Rail platform — making it longer and bringing it up to current standards," Mr. Donn said, "and adding a longer platform for two additional tracks for Amtrak or a high-speed rail in the future, or for Tri-Rail if they need to expand. There's room to add a third platform if necessary."

It also centralizes connections to the new Rental Car Center, which opened last July; MIA Mover; Metrorail (upon completion of the Airport Link) and Amtrak.

Bus depots for Greyhound, Miami-Dade Metrobus, taxis, courtesy buses and shuttles currently serving the airport will be accessible from a public park-



Miami Central Station at this site will link many transportation forms.

ing area connected to the station by a central walkway.

Project cost is estimated at \$158 million.

"It's in our work program this year and next," Mr. Donn said. "We were able to get a state infrastructure bank loan, so we are fully funded and ready to go."

The MIA Mover APM System, a people mover designed to quickly transport passengers between the airport's Main Terminal and Miami Central Station, is under construction by Odebrecht USA and on schedule to be "substantially complete" by September, said Marc T. Henderson, spokesperson for the county Aviation Department's Operations Division.

"The contractor has completed approximately 80% of the work required for the design and construction of the MIA Mover APM System Project," he said. "The initial fleet, which consists of four two-car trains, was delivered to the project in early December 2010.

"The vehicles are currently

undergoing static and dynamic testing, and components of the operating system are also being tested. The guideway was energized early last month, and the first vehicle was tested under its own power last week."

The final piece of the Intermodal Center project is some sort of joint development on 8.5 available acres.

"We've always envisioned a type of development that would support the Intermodal Center, such as additional office space or a corporate hotel that would be funded privately," Mr. Donn said. "We have had some conversations with developers who are interested."

"Once Central Station is under construction, we will be gutting together a plan, and we'll probably put out a Request for Proposals sometime this year."

"Central Station and the joint development were the last components of our plan. We're getting to the end of the tunnel."

Details: [www.micdot.com](http://www.micdot.com).